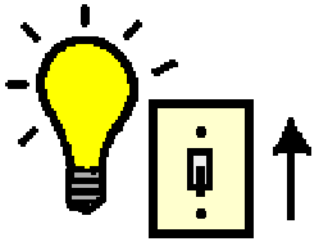


turn on



oven



350^m

1/2 cup



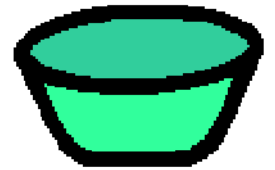
yogurt



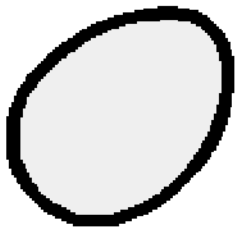
in



bowl



egg



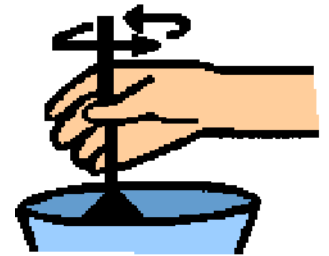
in, inside



bowl



stir



cake mix



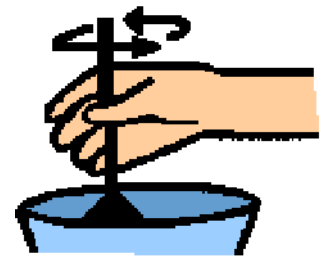
in



bowl



stir



cupcake liner



in



cupcake tin



scoop batter



in



cupcake tin



1/2 full



1/2 teaspoon



preserves



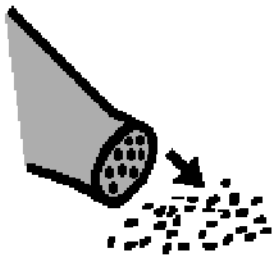
on



cupcake



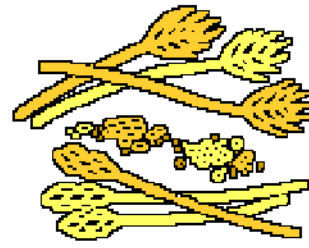
sprinkle



1/2 teaspoon



wheat germ



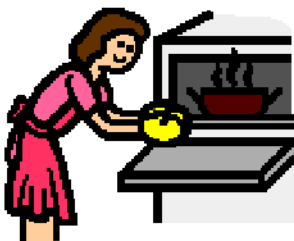
on



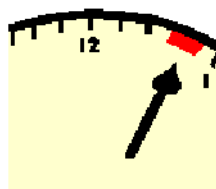
cupcake



bake



25 min.



cool

